



# INFORMATION REQUIRED for ENERFIT V1B PRICING

## 1. Unit Information

See pages 2-4 for a full description of how to submit and what to look for.

## 2. Run Hours

The Enerfit Rep Sheet calculates savings using approximate yearly run hours.

Run hours are defined as the number of hours per year that the fan runs in continuous mode - this would include all of the hours the fan runs in occupied mode & the hours it runs prior to occupancy.

Typical retail stores run around 4,800 hours, a 24/7 unit would run 8,760 hours annually.

## 4. Continuous (Fan ON) or Intermittent Fan (Fan AUTO)?

**Continuous Fan:** The fan always runs during occupied hours regardless of mode

**Intermittent Fan/Fan Auto:** The fan only runs when the unit is in cooling, heating or economizer mode



# ENERFIT UNIT EVALUATION SHEET

## GENERAL GUIDELINES:

1. When taking unit photos, bring a post-it pad.
2. Make one note with the job/site name and a second note with individual unit ID.
3. Make sure both are in the frame of all photos.
4. If you cannot find a nameplate or the nameplate is too damaged to read, follow procedure outlined on page 5.
5. Page 6 contains a checksheet to help you keep track of units and photos.

## SPECIFICALLY NOTE:

1. Is there a VFD installed on the unit? If so, take a tagged/labeled photo with a post-it note attached.
2. On EVERY unit take a photo of the condensate trap. Examples on page 4.
3. Any physical restrictions on unit access (locked gates / fences, ladder required, etc)
4. Any obvious physical damage (burned control board, damaged condenser coils, etc)

## REQUIRED PHOTOS:

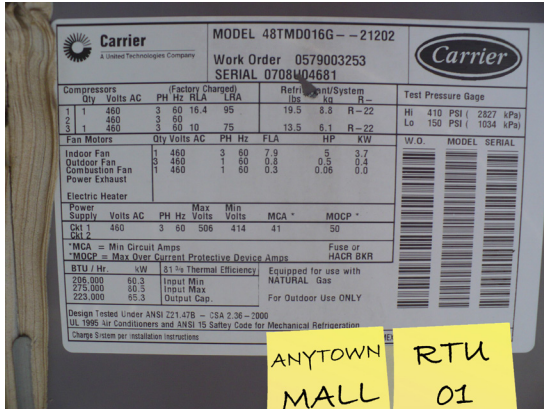
MFR / UNIT TYPE	UNIT NAMEPLATE PHOTO	IS THERE AN EXISTING VFD?	CONDENSATE TRAP	UNIT EVAP FAN MOTOR NAMEPLATE	WIRING DIAGRAMS ON INTERIOR UNIT DOOR	CONTROL BOARDS INSIDE ELEC PANEL	EVAPORATOR COIL CIRCUITING
AAON	X	X	X				
AMERICAN STANDARD	X	X	X				
CARRIER (under 30 Tons)	X	X	X				
CARRIER (over 30 Tons)	X	X	X		X	X	
LENNOX	X	X	X	X			
McQUAY (over 30 Tons)	X	X	X		X	X	
TRANE (non-INTELLIPAK)	X	X	X				
TRANE INTELLIPAK	X	X	X		X	X	
YORK	X	X	X				
UNITS NOT LISTED ABOVE	X	X	X	X	X		X

QUESTIONS? Contact Enerfit Support at 423-629-4175 or [support@enerfit.com](mailto:support@enerfit.com)

# ENERFIT UNIT EVALUATION SHEET

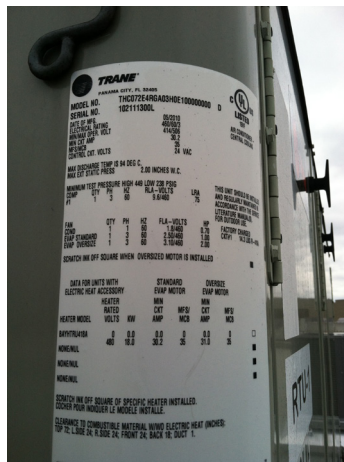
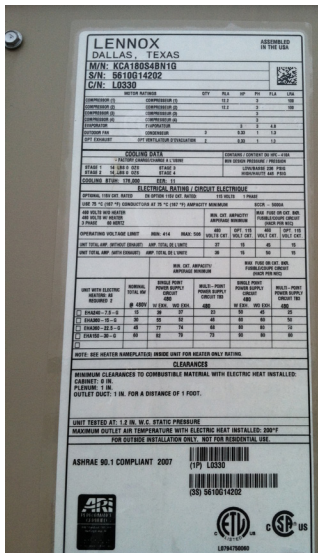
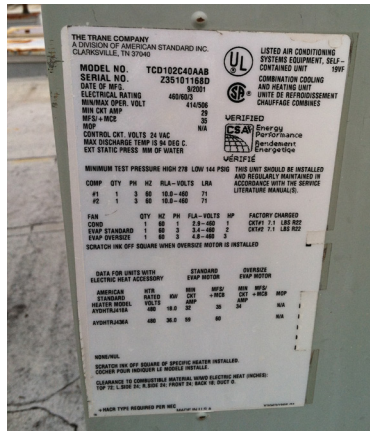
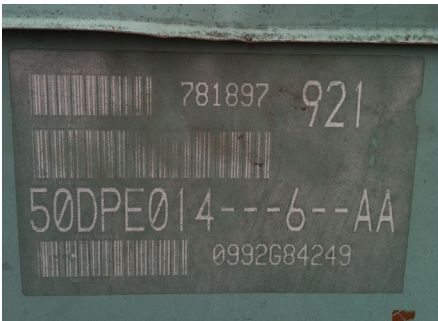
## PHOTO EXAMPLES: UNIT NAMEPLATES (always required)

**Note:** All unit nameplates are located on the outside of the unit.  
There is no consistent location for these (even if they have the same manufacturer).



← PHOTO PROPERLY FRAMED & TAGGED

## TYPICAL NAMEPLATES



QUESTIONS? Contact Enerfit Support at 423-629-4175 or [support@enerfit.com](mailto:support@enerfit.com)

# ENERFIT UNIT EVALUATION SHEET

## PHOTO EXAMPLES:

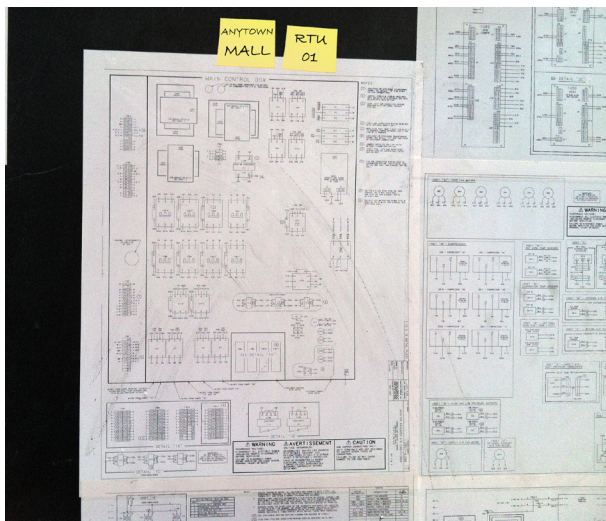
CONDENSATE P-TRAP  
(always required)



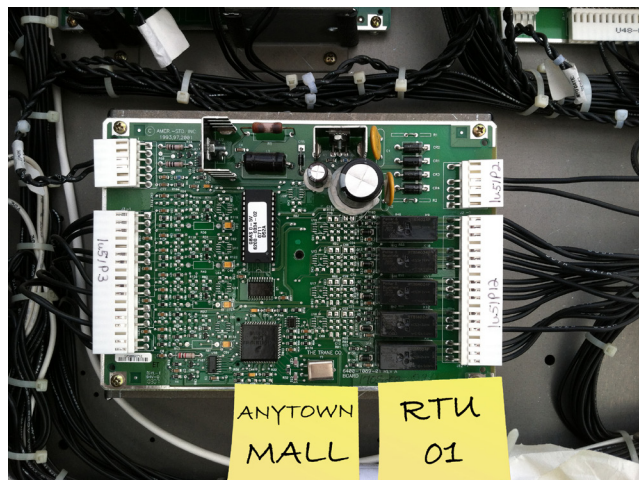
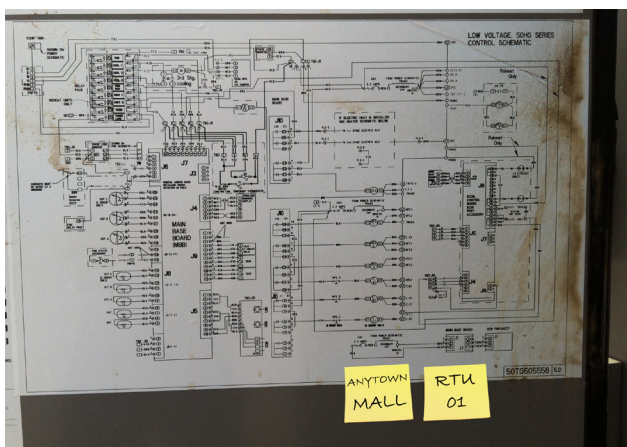
EVAP FAN MOTOR NAMEPLATE  
(when required)



UNIT WIRING DIAGRAMS  
(when required)



CONTROL BOARDS  
(when required)



# ENERFIT MISSING NAMEPLATE WORKSHEET

JOBSITE \_\_\_\_\_

PERFORMED BY \_\_\_\_\_

DATE \_\_\_\_\_

## FILL IN AS MUCH INFORMATION AS POSSIBLE

If the unit nameplate is missing or unreadable, there is generally some information still available to collect. Check inside the unit (especially the electrical compartment) and around disconnects to find as much data as you can.

Unit RTU#/ID \_\_\_\_\_

Approximate Age \_\_\_\_\_

Manufacturer \_\_\_\_\_

Refrigerant (R-22 or R-410A) \_\_\_\_\_

Model number \_\_\_\_\_

Unit Voltage \_\_\_\_\_

Evaporator/Indoor Fan Motor HP \_\_\_\_\_

Compressor 1 Amps \_\_\_\_\_

Evaporator/Indoor Fan Motor Current \_\_\_\_\_

Compressor 2 Amps \_\_\_\_\_

Compressor 3 Amps \_\_\_\_\_

Compressor 4 Amps \_\_\_\_\_

## TAKE PHOTOS OF

Unit Exterior

Filter section / Coils

Electrical Section

Condensate P-trap

Control Section

VFD (if present)

Economizer

## CHECK ANY AND ALL APPLICABLE

Has working VFD

Has economizer (black box)

Has economizer (Belimo Style)

